

RANGE
2WD
2 WHEEL DRIVE

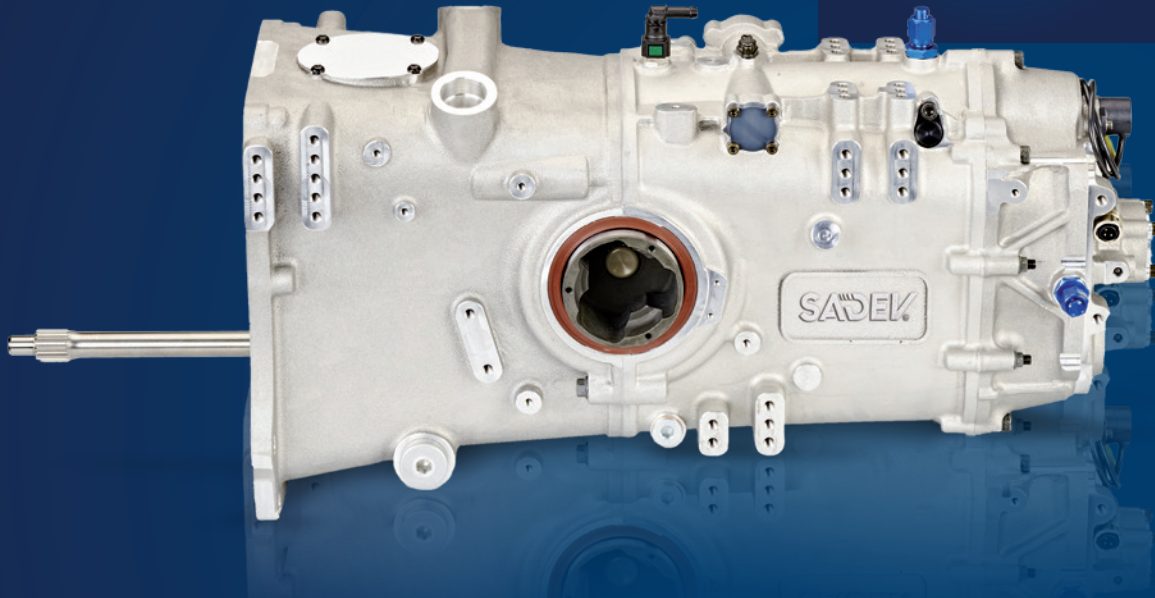


 **SL82LW**
TRANSAXLE

SADEV[®]
RACING TRANSMISSION

SADEV
RACING TRANSMISSION

RANGE
2WD
2 WHEEL DRIVE



SL82LW TRANSAXLE

The **SL82LW** gearbox is the perfect extension of the **SL75LW**: it uses the same mounting and fixing points, enabling instant interchangeability. With optimised weight and improved internal mechanics, the **SL82LW** gearbox offers attractive technical characteristics that exceed the capacity limits of the **SL75LW**.

APPLICATIONS

- › *Circuit*
- › *Hill Climb*
- › *Single-seater*



TECHNICAL SPECS

6 speed sequential gearbox + 1 reverse gear

Manual sequential gear selection

External selector rocker (optional)

Bevel gear ratio : 9x30

The bevel gear is cut and grinded in house on our CNC units

Wide range of ratios available

Straight cut gears

Dog ring gear engagement

Interchangeable gear ratios

High strength carburizing steel

Gear teeth grinded with optimized profile

Shot penning on internal parts

Specific input shaft

Free differential (limited slip differential optional)

Ramp and plate system - 3 discs type

Preload made by spring washer

Wide range of ramp plates available

Contactless gear position sensor

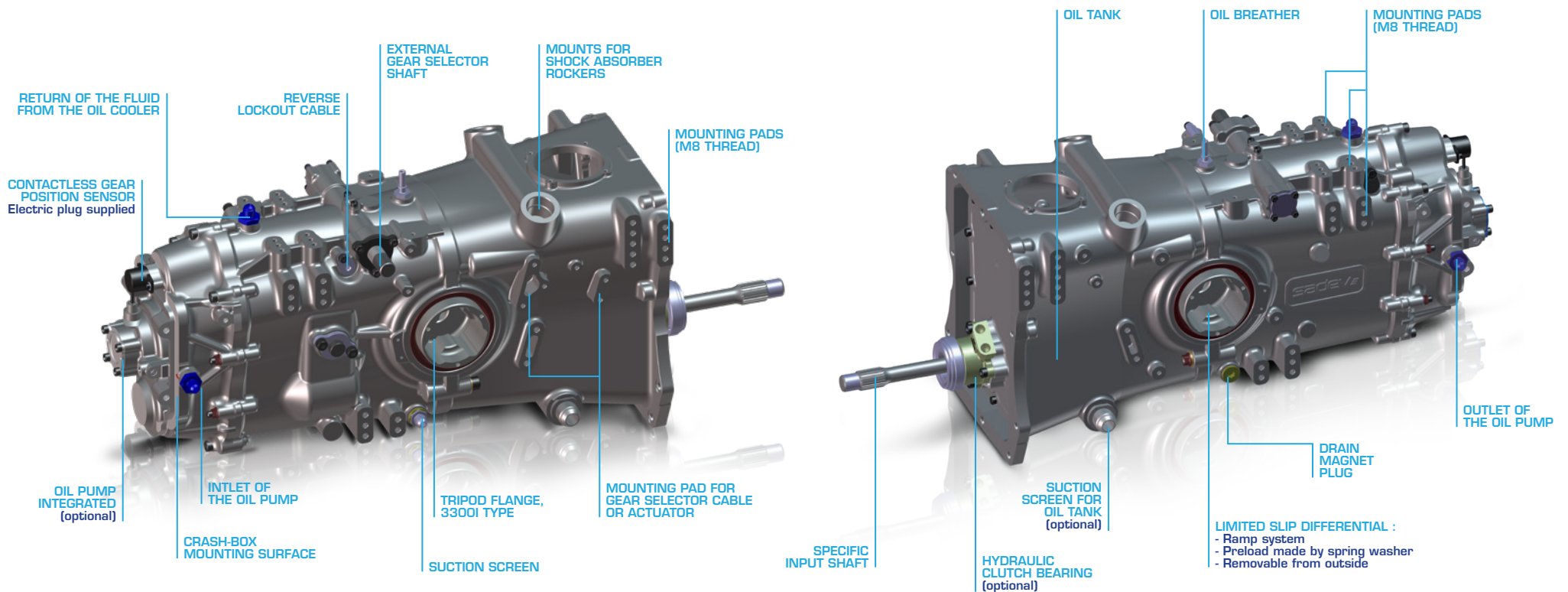
Splash lubrication system

Oil pump integrated (optional)

Oil suction screen

AS7G aluminum casings

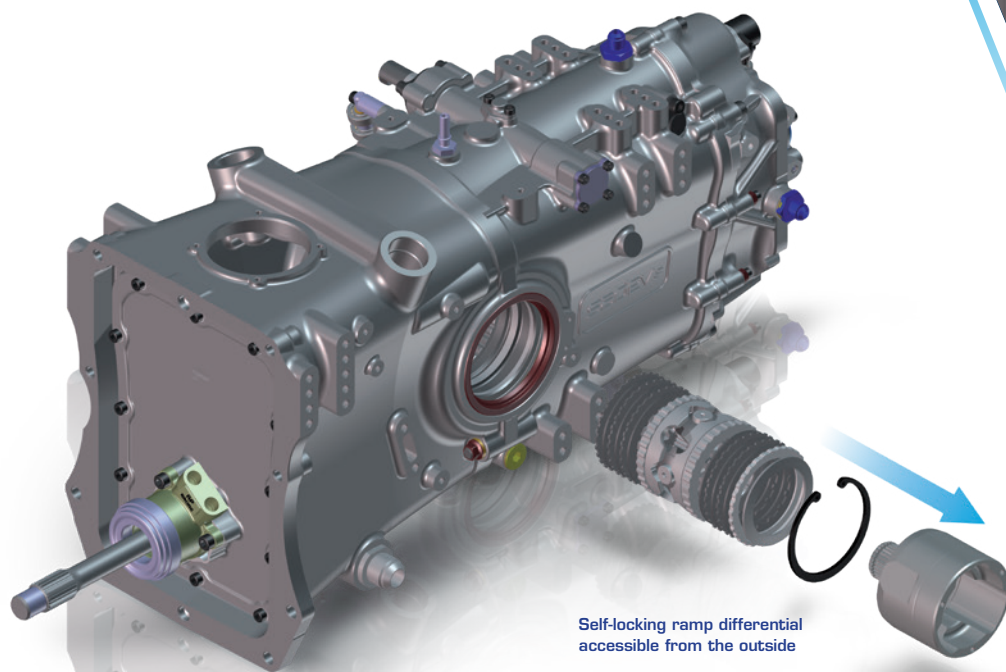
Weight (input shaft included) : 43 Kg - 95 lbs



ACCESSORIES

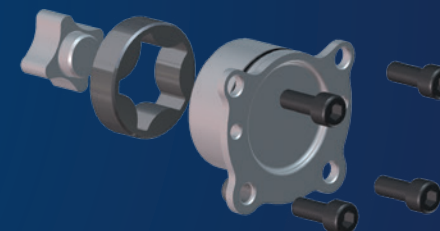
- › *Push-pull cable*
- › *Mounting plate*
- › *Hydraulic paddle-shift*
- › *Drive shafts*

LIMITED SLIP DIFFERENTIAL



OIL PUMP (OPTIONAL)

Oil pump integrated and mechanically driven





SL82LW TRANSAXLE

- › **Gears:** The **SL82LW** benefits from optimised and strengthened gear tooth profiles for maximum efficiency.
- › **Ratio selection:** Optimised clutch and control shaft definition for smoother gear shifting.
- › **Gear position sensor:** The contactless gear position sensor provides a reliable signal regardless of the conditions (humidity, vibration, high temperature).
- › **Rear casing:** The structure of the rear casing is designed so that the crash box module and single-seater wing can be fixed to it.
- › **Robustness:** Our finite element calculation tool enables us to design extremely strong, compact, lightweight casings.
- › **Cooling:** An oil pump built into the **SL82LW** and driven mechanically enables an external oil cooler to be connected.

MAXIMUM ENGINE TORQUE





**ONE PASSION:
VICTORY**

SADEV has an exceptional record in supplying unique engineering to the most prestigious drivers and manufacturers. SADEV's products stand out for their technology, their excellence and their ambition. As precise as they are reliable, these high-tech masterpieces are the key to your victory. SADEV has just one goal: to make sure you win.

FOLLOW US



WWW.SADEV-TM.COM

6, rue Grand'Montains - 85110 SAINT-PROUANT - FRANCE

Tel: +33 (0)2 51 66 42 68

sadev@sadev-tm.com



A TEAM AT YOUR SIDE

- FRANCE** SADEV FRANCE - sadev@sadev-tm.com
- USA** SADEV TRANSMISSIONS, INC. - info.usa@sadev-tm.com
- UK** SWR MOTORSPORT LTD - servicesswrmotorsport@gmail.com
- ITALY** GIEFFE RACING - info@giefferacing.com
- SPAIN** DE LA PUENTE MOTORSPORT - dlpmotorsport@movistar.es
- NETHERLANDS** RACING DEVELOPMENT - info@racingdevelopment.nl
- NETHERLANDS** PETERS AUTOSPORT - bart@petersautosport.nl
- BELGIUM** R TEC - info@rtec.ws
- CZECH REPUBLIC** SADAC - info@sadac.cz
- GERMANY** MTO ENGINEERING - info@mtoengineering.com
- SWEDEN** HANSEN MOTORSPORT - kenneth@hansen-motorsport.se
- DENMARK** GUNNAR AASKOV MOTORSPORT - mail@aaaskov-motorsport.dk
- FINLAND** SET PROMOTION - kalle.pinomaki@setpromotion.com
- SWITZERLAND** CHRISTIAN FERRARI - ferrach@bluewin.ch
- SOUTH AFRICA** CENTURY RACING - julien@centuryracing.co.za
- ARGENTINA** JPO RACING - racingjpo@gmail.com
- BRAZIL** CD MOTORSPORT ENGINEERING - sadev.brasil@gmail.com

